

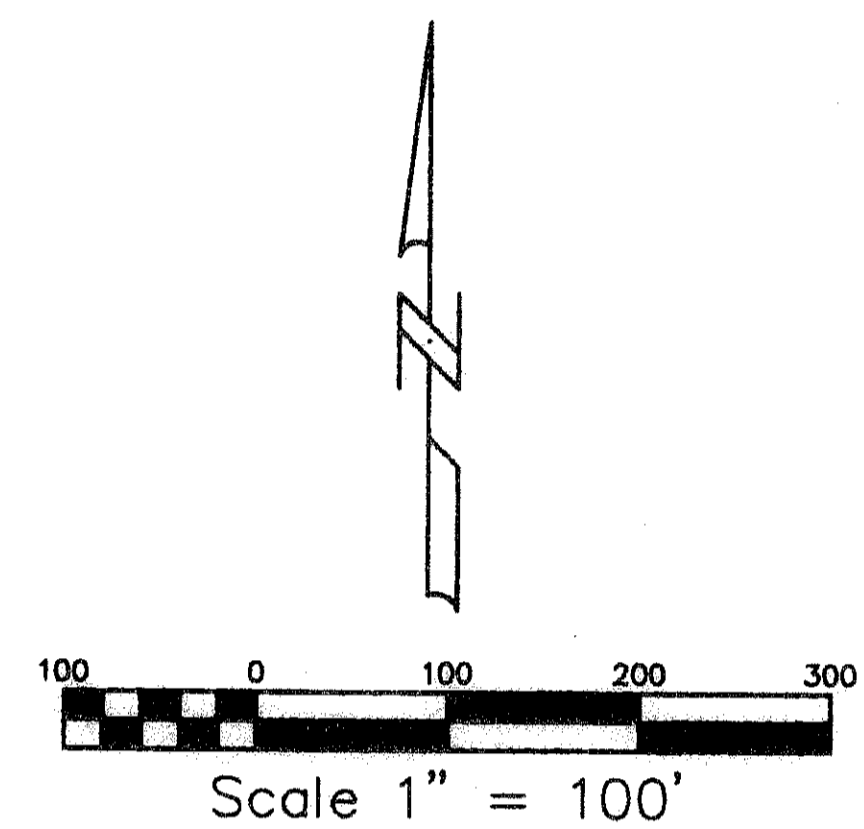
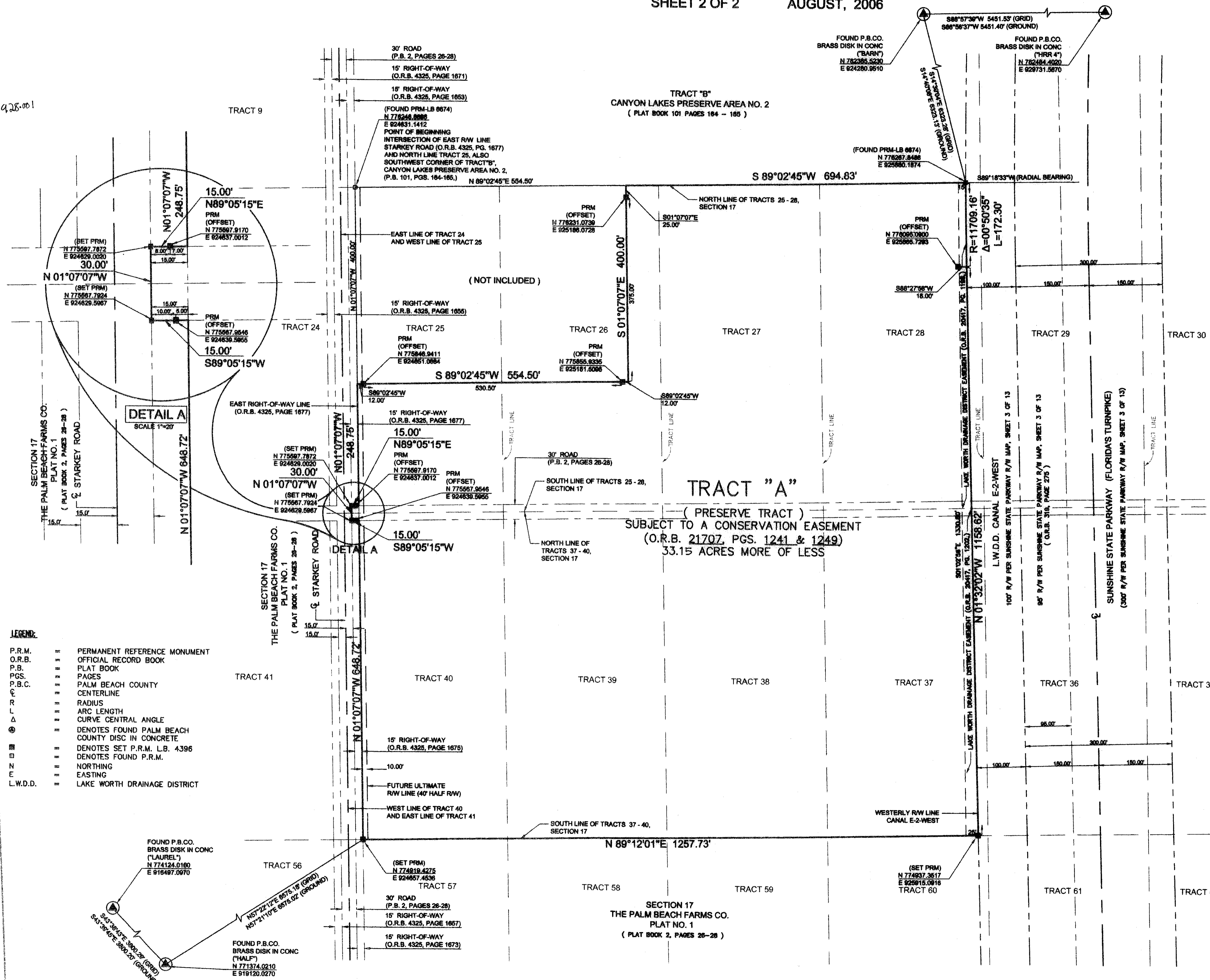
# ASCOT - LYONS & ATLANTIC PUD PRESERVE PARCEL 5

BEING A REPLAT OF A PORTION OF TRACTS 25, 26, 28, 37, AND 40, SECTION 17, AND ALL OF TRACTS 27, 38, AND 39, SECTION 17, PALM BEACH FARMS COMPANY PLAT NO. 1, ACCORDING TO THE PLAT THEREOF, AS RECORDED IN PLAT BOOK 2, PAGES 26 THROUGH 28, OF THE PUBLIC RECORDS, ALL LYING WITHIN SECTION 17, TOWNSHIP 46 SOUTH, RANGE 42 EAST, PALM BEACH COUNTY, FLORIDA.

SHEET 2 OF 2 AUGUST, 2006

83

STATE OF FLORIDA      SS  
 COUNTY OF PALM BEACH  
 THIS PLAT WAS FILED FOR RECORD AT  
 \_\_\_\_ M., THIS \_\_\_\_ DAY OF \_\_\_\_ 2007  
 AND DULY RECORDED IN  
 PLAT BOOK NO. \_\_\_\_\_  
 ON PAGE \_\_\_\_\_  
 SHARON R. BOCK  
 CLERK AND COMPTROLLER  
 BY \_\_\_\_\_ D.C.



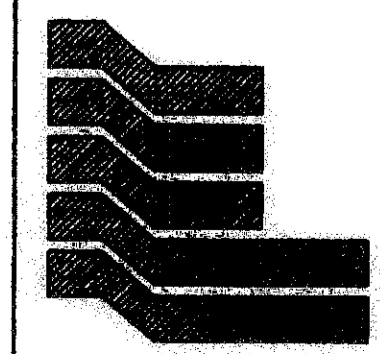
- LEGEND:**
- P.R.M. = PERMANENT REFERENCE MONUMENT
  - O.R.B. = OFFICIAL RECORD BOOK
  - P.B. = PLAT BOOK
  - P.C.S. = PAGES
  - P.B.C. = PALM BEACH COUNTY CENTERLINE
  - R = RADIUS
  - L = ARC LENGTH
  - Δ = CURVE CENTRAL ANGLE
  - ⊙ = DENOTES FOUND PALM BEACH COUNTY DISC IN CONCRETE
  - ⊞ = DENOTES SET P.R.M. L.B. 4396
  - ⊞ = DENOTES FOUND P.R.M.
  - N = NORTHING
  - E = EASTING
  - L.W.D.D. = LAKE WORTH DRAINAGE DISTRICT

**COORDINATE NOTE:**  
 STATE PLANE COORDINATES SHOWN ARE GRID DATUM, NAD 83 1990 ADJUSTMENT, FLORIDA EAST ZONE, COORDINATE SYSTEM 1983 STATE PLANE, TRANSVERSE MERCATOR PROJECTION  
 LINEAR UNIT = US SURVEY FEET  
 ALL DISTANCES ARE GROUND  
 SCALE FACTOR = 1.0000242  
 GROUND DISTANCE X SCALE FACTOR = GRID DISTANCE  
 COUNTER CLOCKWISE BEARING ROTATION (PLAT TO GRID) -00°01'02"

THE NORTH LINE OF TRACTS 25 THROUGH 28 INCLUSIVE OF SECTION 17 THE PALM BEACH FARMS CO. PLAT NO. 1 (PLAT BOOK 2, PAGES 26 - 28) PUBLIC RECORDS OF PALM BEACH COUNTY, FLORIDA, ALSO BEING THE SOUTH LINE OF TRACT "B" "CANYON LAKES PRESERVE AREA NO. 2" (PLAT BOOK 101, PAGE 164) PUBLIC RECORDS OF PALM BEACH COUNTY, FLORIDA.

**NOTE:**  
 THE CREATION OF THIS BOUNDARY PLAT OF THE CONSERVATION EASEMENT LIMITS DOES NOT RESULT IN THE CREATION OF ANY ILLEGAL LOTS ON THE REMAINING ADJACENT LAND.

SUBMISSION A-1000  
 BOOK 10  
 FLOOD MAP # 2004  
 ZONING A-1000-PUD  
 ZONE 5-1  
 DATE 8/5/06  
 P.B. NAME



Landmark Surveying & Mapping Inc.  
 1850 Forest Hill Boulevard  
 Ph. (561) 433-5405 Suite 100 W.P.B. Florida  
 LB # 4396

ASCOT - LYONS & ATLANTIC PUD  
 PRESERVE PARCEL 5